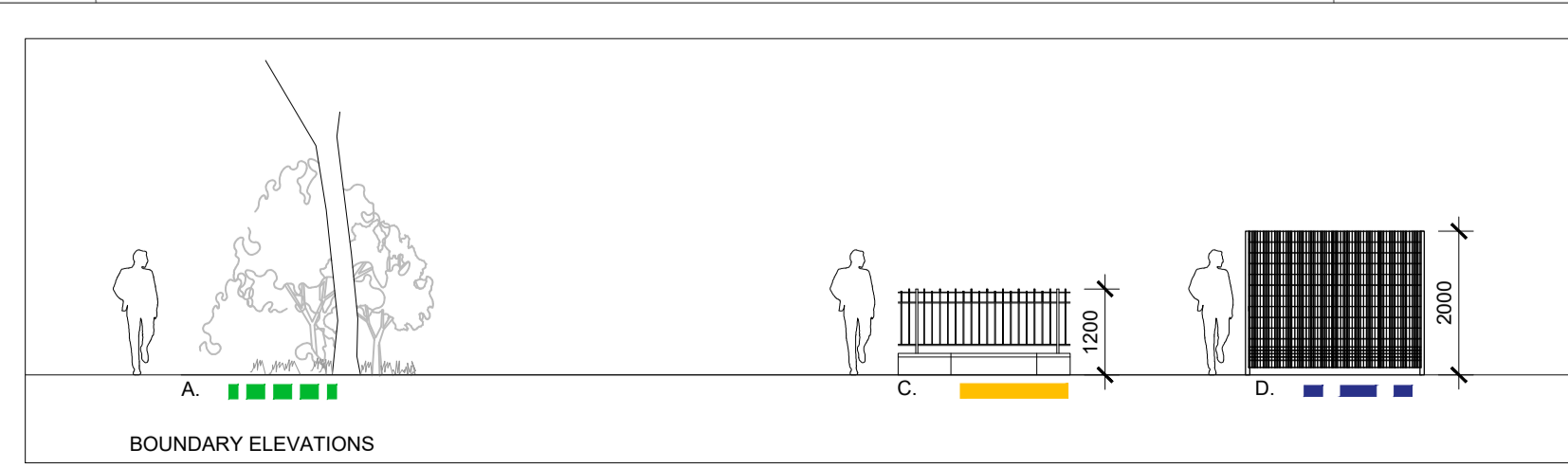


LEGEND AND SCHEDULE OF BOUNDARIES:

- PLANNING APPLICATION BOUNDARY
- - - A. EXISTING VEGETATION RETAINED / REINSTATED WITH ADDITIONAL PLANTING WHERE REQUIRED
- - - - - B. EXISTING OPEN BOUNDARY RETAINED
- C. PROPOSED 300mm PLINTH AND 900mm RAILING WITH ACCESS POINTS TO DEVELOPMENT
- - - D. PROPOSED 2m WELDED MESH PANEL FENCE IN PRIVATE GARDENS TO INSIDE OF EXISTING VEGETATION
- E. PROPOSED 2m HIGH CONCRETE POST AND TIMBER PANEL FENCE AS BOUNDARY BETWEEN PRIVATE GARDENS. REFER TO ARCHITECTS DETAIL.
- - - F. PROPOSED OPEN BOUNDARY TO FUTURE DEVELOPMENT
- - - G. PROPOSED PEDESTRIAN RAMP/BRIDGE REFER TO ENGINEERS DETAIL
- H. 2m HIGH BRICK WALL REFER TO ARCHITECTS DETAIL



This drawing is the copyright of the Landscape Architect. Unless otherwise stated all dimensions are in millimetres. Where dimensions are not given, drawings must not be scaled and the matter must be referred to the Landscape Architect. If the drawing includes conflicting details/dimensions the matter must be referred to the Landscape Architect. All dimensions must be checked on site. The Landscape Architect must be informed, by the Contractor, of any discrepancies before work proceeds.

NOTES

DATE	REV.	DESCRIPTION
17.12.2018	A	Site boundary revised
08.08.2019	B	Site boundary revised
06.10.2019	C	Boundary elevations revised

DATE	REV.	DESCRIPTION	DATE	REV.	DESCRIPTION

DATE	REV.	DESCRIPTION	DATE	REV.	DESCRIPTION

PROJECT NO.	SCALE	SHEET SIZE	DRAWN BY	CHECKED BY	DATE ISSUED
Sh 10	1:1000	A2	TR	DB	06.12.2019

DERMOT FOLEY LANDSCAPE ARCHITECTS
 MALPAS STREET, BLACKPITTS, D08 D206, IRELAND. T: 01 303 1464148 WWW.DERMOTFOLEY.COM

CLIENT: SHANNON HOMES

PROJECT: COLP WEST, DROGHEDA, CO. MEATH

DRAWING: BOUNDARY PLAN

ISSUE STATUS: PLANNING

DRAWING NO.: Sh 10-DR-202

REVISION: C

DATE: 06.12.2019

SCALE: 1:1000

SHEET SIZE: A2

DRAWN BY: TR

CHECKED BY: DB

DATE ISSUED: 06.12.2019

NORTH